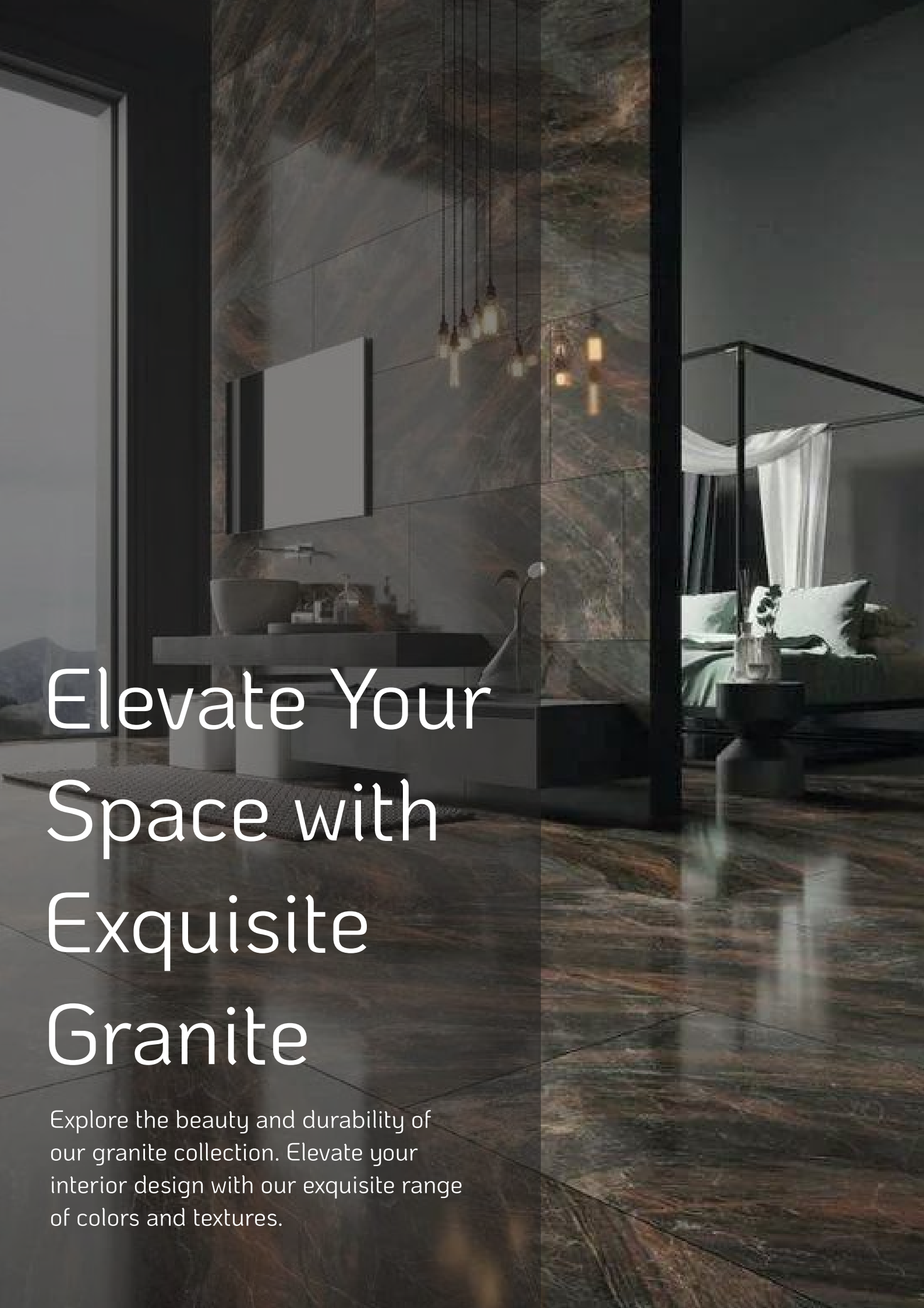


Souza United Exports

Product Catalog 2024





Elevate Your Space with Exquisite Granite

Explore the beauty and durability of our granite collection. Elevate your interior design with our exquisite range of colors and textures.

Discover the Essence of Elegance: Souza United Exports

Welcome to Souza United Exports, your premier destination for exquisite granite exports. Nestled in the picturesque town of Karkala, amidst the lush greenery of the Western Ghats in India, our journey began in 2023 with a vision to bring the timeless beauty of natural stone to the world.

At Souza United Exports, we take pride in offering a curated selection of the finest quality granites sourced directly from our own quarry. With uncompromising dedication to craftsmanship and sustainability, each slab tells a story of nature's artistry, ready to enhance any architectural masterpiece.

Our commitment to excellence extends beyond mere exports. We specialize in providing customizable granite solutions tailored to your unique vision. Whether it's transforming granite into elegant benches, durable footpaths, or majestic monument bases, our skilled artisans ensure every cut reflects your distinct style and purpose.

Step into a world of possibilities with Souza United Exports. Experience the beauty, durability, and versatility of our granites, meticulously crafted to elevate your projects to new heights of sophistication.

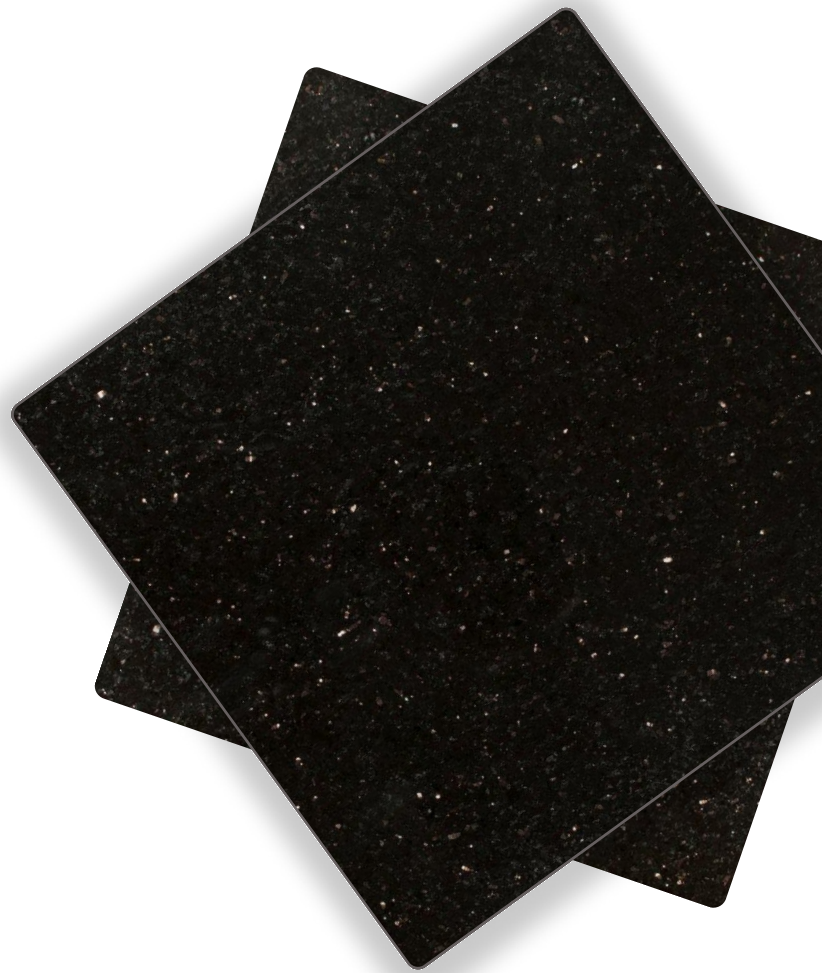
Contact us today to explore our collection and embark on a journey of timeless elegance with Souza United Exports.



#01

Black Galaxy

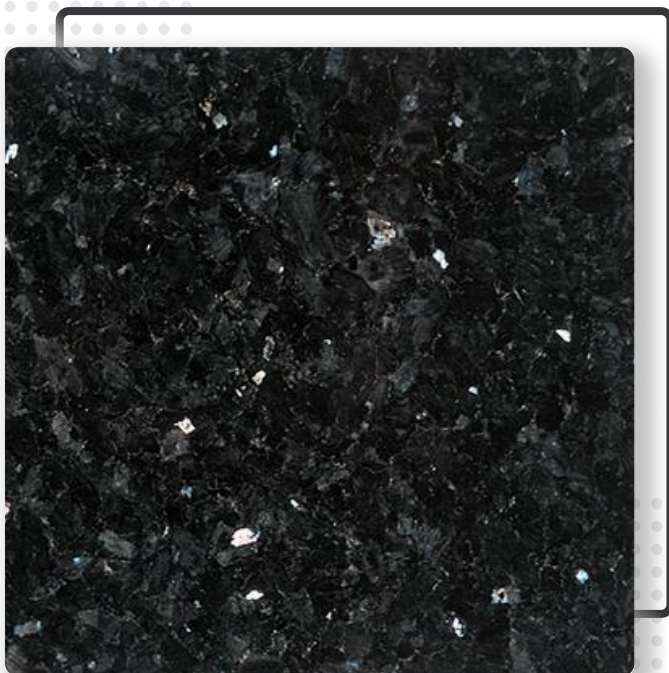
Black Galaxy Granite from India is prized for its deep black color and shimmering white and gold flecks. It's perfect for various uses, including countertops, flooring, and walls, both indoors and outdoors. Known for its luxury and durability, it's also popular for monuments and construction projects.



#02

Black Pearl Granite

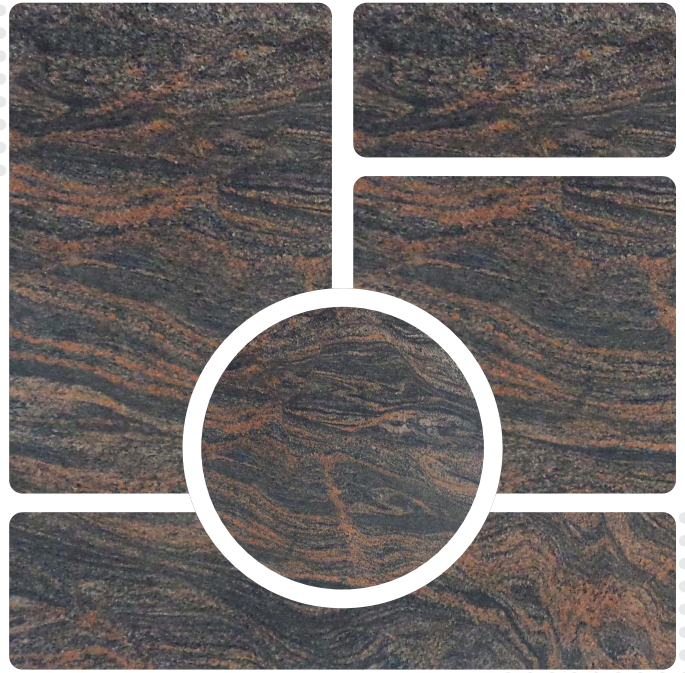
Black Pearl Granite, also known as Silver Pearl Granite, is a striking natural stone characterized by its predominantly black and grey base with intricate speckles of gold, silver, brown, green, and various shades of gray. From a distance, the stone appears relatively uniform, but as you move closer, the intricate patterning and mineral deposits become more apparent, revealing its true complexity and beauty. The glittering effect of the gray and silver flecks against the obsidian black background gives it a shimmering quality reminiscent of a shiny pearl, making it a popular choice for adding a touch of elegance and sophistication to any space.



#03

Paradiso Granite

Paradiso Granite is a durable and visually striking natural stone featuring a blend of gray, violet, brown, and pink hues with wavy or swirling patterns. Quarried in Tamil Nadu and Karnataka, it is ideal for countertops, flooring, wall cladding, and outdoor applications. Its robustness and low porosity make it easy to maintain, requiring periodic sealing. Versatile in design, it complements various styles and is priced in the mid-range. Its long-lasting nature makes it a sustainable choice for various architectural and design projects.



#04

Chima Pink Granite

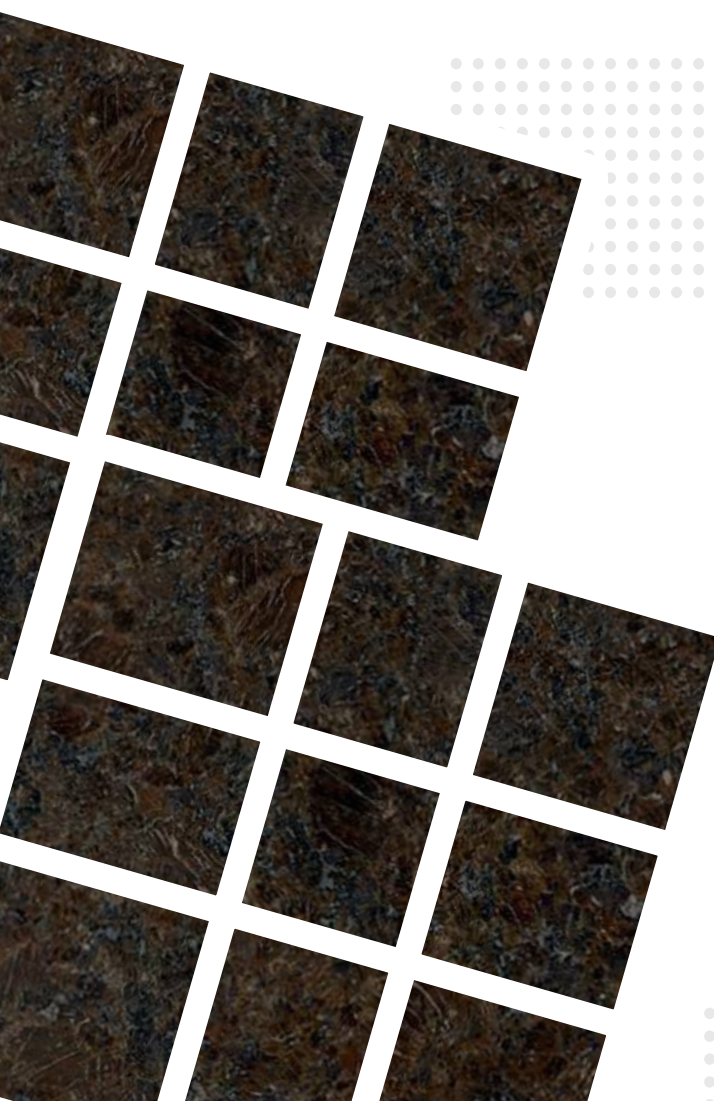
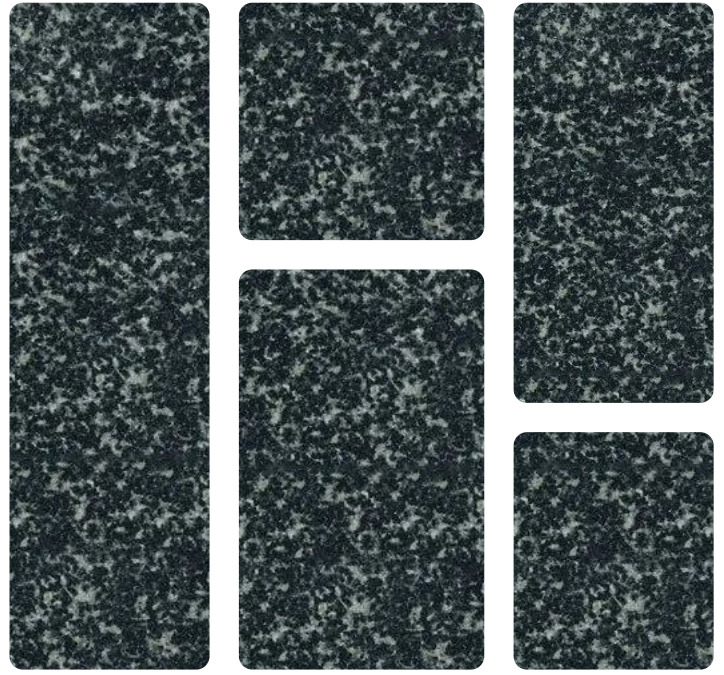
Chima Pink granite is a distinctive natural stone known for its soft pink hues and unique patterns. Chima Pink granite is durable and suitable for a variety of applications, including countertops, flooring, wall cladding, and exterior paving. It is resistant to scratches, heat, and stains, making it a practical choice for both residential and commercial projects. Chima Pink granite is prized for its soft pink hues, durability, and versatility, making it a favored choice among homeowners, designers, and architects for adding a touch of elegance and warmth to interior and exterior spaces alike.



#05

Hassan Green Granite

Hassan Green granite is a versatile and aesthetically pleasing natural stone that offers a blend of beauty and durability. Its dark green color with subtle variations makes it a favorite for countertops, flooring, wall cladding, and decorative elements. Originating from the Hassan district in Karnataka, India, this granite is known for its high quality and is widely used in both domestic and international markets. Regular maintenance and proper installation ensure its longevity and continued appeal.



#06

Coffee Brown Granite

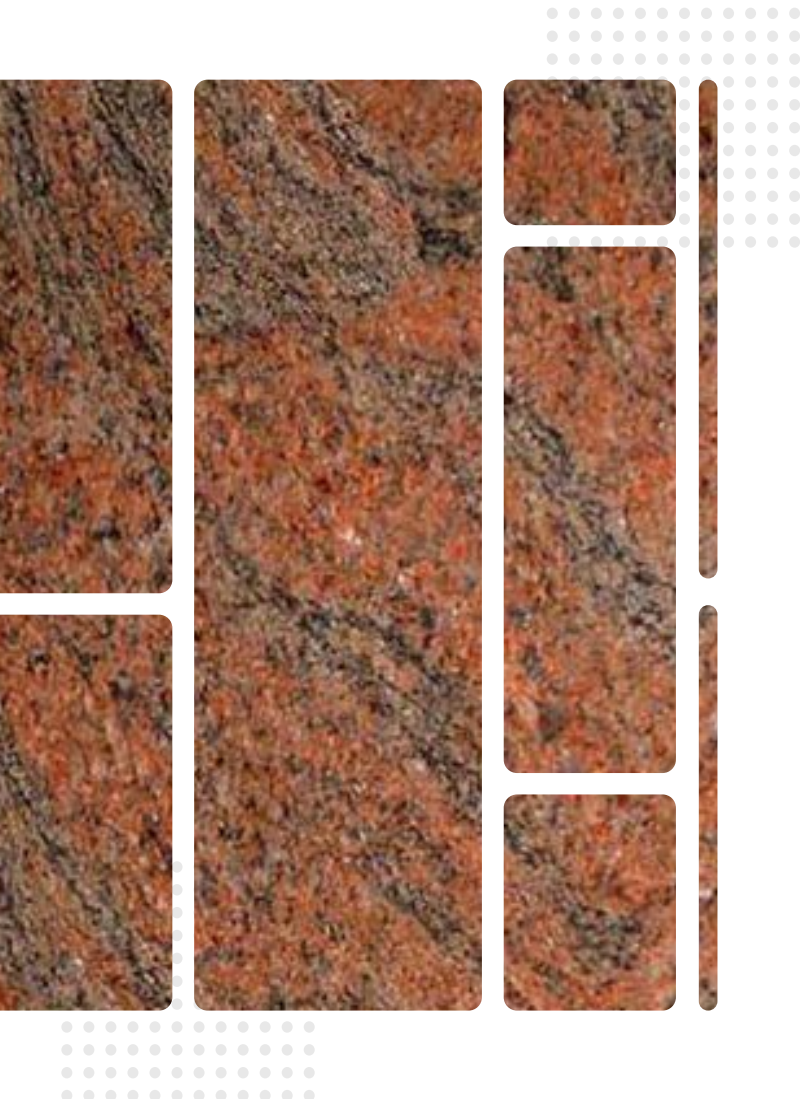
Coffee Brown granite is a versatile and visually appealing natural stone, known for its deep brown color with lighter brown and black speckles. Mined primarily in Karnataka and Andhra Pradesh, India, this granite is suitable for a wide range of applications including countertops, flooring, wall cladding, and decorative elements. Its durability, low maintenance, and resistance to heat and scratches make it a popular choice for both residential and commercial projects. Regular maintenance and professional installation will ensure its longevity and continued aesthetic appeal..



#07

Blue Sapphire Granite

Vizag Blue granite is a popular and visually striking natural stone known for its blue-grey background and intricate patterns of black, white, and grey streaks. Mined primarily in the state of Andhra Pradesh, India, near the city of Visakhapatnam, it is highly valued for its unique appearance and durability.



#08

Tiger Red Granite

Tiger Red granite features a rich blend of red, burgundy, and brown tones with intricate black and gray veining. Tiger Red is also known for its durability and resistance to heat, scratches, and stains.

It is suitable for both interior and exterior applications, making it a versatile choice for countertops, flooring, walls, and even outdoor paving.

Tiger Red granite is prized for its striking color palette, durability, and versatile applications, making it a favored choice among homeowners, designers, and architects alike.

#09

Imperial Red

New Imperial Red granite is a stunning natural stone featuring deep red, brown, and black granules with a brown base and large red and peach speckles. This elegant and durable material is perfect for residential and commercial projects, including countertops, kitchen islands, backsplashes, flooring, and more. Its simplicity and elegance make it popular among builders and designers. Souza United Exports offers premium quality New Imperial Red granite in slabs, blocks, and tiles with various finishes like polished, leather, honed, and flamed to meet diverse needs.



#10

Viscount White Granite

Viscount White Granite is a natural stone known for its white background with gray and black veining, offering a unique and elegant appearance. Quarried primarily in India, it is highly durable, resistant to scratches and high temperatures, making it suitable for countertops, flooring, wall cladding, and outdoor applications. It has a medium to coarse grain texture and can be finished in various ways. While less porous than some stones, it should be sealed periodically to prevent stains. Viscount White Granite is versatile, complementing many design styles and is generally priced in the mid-range. It offers a balance of aesthetic appeal and functional durability..





CUSTOMIZATION
OF
GRANITES

#01

Granite Slabs

A slab of granite is a large, flat piece of natural stone, typically rectangular in shape. The surface of a granite slab can vary from smooth and polished to rough and textured, depending on its finish. The colors range widely, from light shades like white, gray, and beige to darker tones like black, brown, and deep green, often with veins, swirls, or patterns that add to its unique aesthetic appeal.



#02

Counter Tops

Granite countertops are durable and visually appealing surfaces made from natural granite stone. They are commonly used in kitchens, bathrooms, and other areas requiring a sturdy work surface. Granite countertops are prized for their unique, natural patterns and wide range of colors, which result from the varied mineral content within the stone. They are highly resistant to heat, scratches, and stains, making them an ideal choice for busy environments. These countertops are often polished to a glossy finish, although they can also be honed or textured for different looks. Due to their natural origins, each granite countertop is unique, offering a one-of-a-kind design element that adds value and elegance to any space.



#03

Tile Size

Granite tiles are smaller, uniform pieces of natural granite stone, typically used for flooring, wall cladding, backsplashes, and other decorative applications. The size of granite tiles can vary, but common dimensions include 12x12 inches, 16x16 inches, and 18x18 inches, though they can also be cut into custom sizes to suit specific design needs. Granite tiles retain the durability, strength, and distinctive patterns of granite slabs but are more versatile in their use due to their smaller size. They can be polished for a smooth, glossy finish, honed for a matte appearance, or textured for added grip in areas like bathrooms or outdoor spaces. The tiles can be laid out in various patterns, such as straight, diagonal, or herringbone, allowing for creative design possibilities while maintaining the luxurious, natural beauty of granite.



#04

Garden Space

In garden spaces, granite is often used as a durable and attractive material for a variety of landscaping elements. Granite's natural strength, resistance to weather, and slip-resistant texture make it an ideal choice for outdoor applications. Using granite in garden spaces not only enhances the durability and functionality of outdoor areas but also brings a timeless and natural elegance to the landscape. The stone's ability to withstand harsh weather conditions while maintaining its beauty makes it a favorite choice for long-lasting garden design.



#05

Designer Props

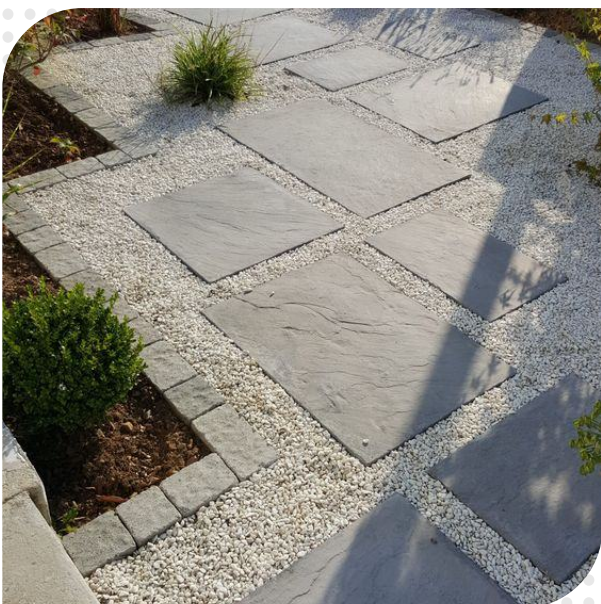
Granite is a popular choice among designers due to its natural beauty, durability, and versatility, making it an ideal material for various design projects. Designers appreciate granite for its unique, organic patterns and wide range of colors, which can complement both traditional and contemporary styles. The stone's ability to be polished, honed, or textured allows designers to tailor the finish to suit the desired aesthetic, whether it's a high-gloss, luxurious look or a more subdued, matte appearance. Incorporating granite into a design not only enhances the visual appeal but also adds value to the property. Each piece of granite is unique, with distinct veining and coloring, providing a one-of-a-kind element that can serve as a focal point in any room. Whether used in large slabs or smaller tiles, granite remains a favored material for designers aiming to create stylish and enduring interiors and exteriors.



#06

Footpath Base

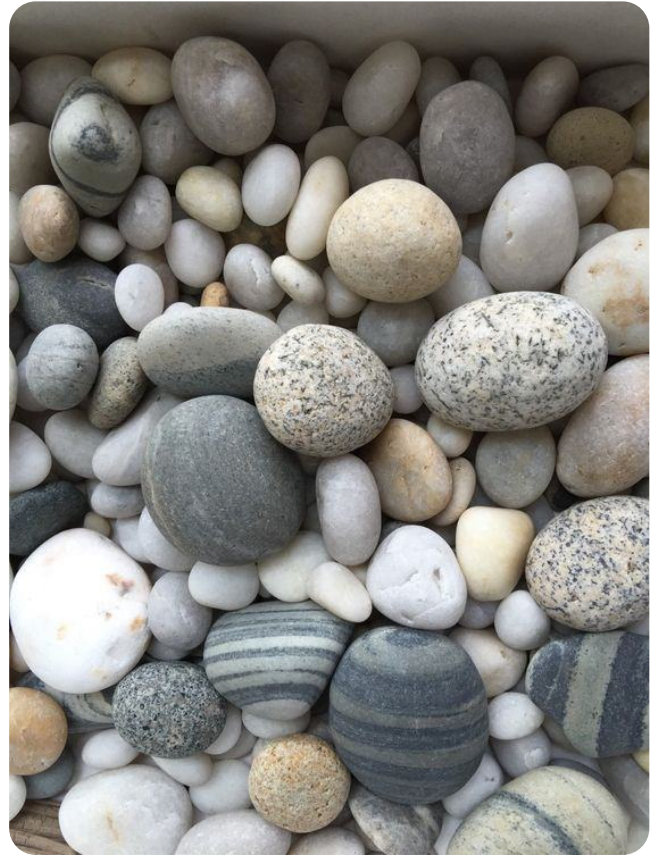
A granite footpath base provides a strong, durable, and aesthetically pleasing foundation for outdoor walkways. Granite is a popular choice for footpaths due to its natural beauty, resistance to wear, and ability to withstand heavy foot traffic and harsh weather conditions. A granite footpath base is not only functional and long-lasting but also adds a touch of elegance and sophistication to any outdoor space. Whether winding through a garden, leading to a front door, or connecting different areas of a landscape, a granite footpath provides a beautiful and enduring solution for outdoor walkways.



#07

Pebbles

Pebbles are small, smooth stones, often found on beaches or riverbeds, that come in various colors and sizes. They are commonly used in landscaping, interior decor, and crafts for their natural beauty and versatility. pebbles can be used as an aggregate in concrete, contributing to the material's strength and aesthetic appeal, especially in exposed aggregate finishes. commonly used to create aesthetically pleasing garden paths and walkways. Pebbles are often used as a decorative ground cover in gardens, replacing mulch or grass in certain areas. They help prevent soil erosion and suppress weed growth.



SOUZA UNITED EXPORTS

Email

souzaunitedexports@gmail.com

Phone

+91 8618278339 | +91 9740250911

Address

3-17/19, 1st floor, Konkan Plaza, near Madhuvan Garden,
Jodukatte, Karkala, Udupi district, Karnataka, India
574104

